



CRIMSAFE SAFE-S-CAPE

EMERGENCY EXIT SYSTEM

The Safe-S-Cape is a unique key-less exit system. Even though Safe-S-Capes are easy to escape from internally, they are still incredibly difficult to penetrate from the outside as they feature the same screw system and triple 'anti-jemmy' design as traditional Crimsafe grilles.



TECHNICAL INFORMATION

Mesh

Crimsafe Safe-S-Capes feature Crimsafe Tensile-Tuff® Security Mesh, which is made of 304 Grade Stainless Steel.

Clamp System

Crimsafe Safe-S-Capes feature a patented Security Mesh Clamp System. While inferior products simply glue or wedge mesh into a frame, Crimsafe sandwiches Tensile-Tuff® Security mesh between two serrated pieces of aluminum, and then screws this mesh into place. This results in a strong, vice-like grip which has a much stronger tolerance to force than many competing products.

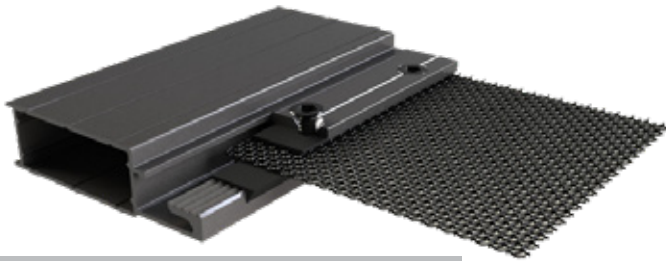
Hinged

Crimsafe Safe-S-Capes can be hinged at the top or sides and made to swing outward or inward. This makes them suitable for a wide range of spaces.

Color

Crimsafe Safe-S-Capes are available with frames various different colors, ranging from shades of white and gray, to brown and blue. Various woodgrain tones are also available and offer a look that is impressively realistic.

BENEFITS



Cross section of mesh and frame



Close-up from inside

Excellent Security

Crimsafe Safe-S-Capes allow easy exit from inside, but remain incredibly difficult to penetrate from the outside.

Quick Exit

A Crimsafe Safe-S-Cape allows for a quick exit in an emergency.

Suits Any Window

Different swing and hinge options mean that the Crimsafe Safe-S-Cape can be made to fit any window.

Satisfaction Guaranteed

Crimsafe Safe-S-Capes comes with a 10 Year standard Warranty.



Book your FREE in-home consultation today! 866-667-6799